

INTELLI-LOG™

Get the information you need.

Next-Gen Logging Tool

A compact, rugged logging tool built from the ground up to withstand harsh downhole environments. Engineered for coiled tubing applications and fully compatible with WWT International tractors, milling and drilling tools.

Smarter Data Visualization

We turn complex datasets into clear, actionable visuals. Our tools transform data into interactive graphs and charts and if you need custom analysis or presentation, our engineers are here to help.

Full-Service Support, Start to Finish

Our team supports your operations from start to finish with full-service onsite mobilization and 24/7 support. To learn more, visit our website and contact a member of our team today.

Smarter Data Visualization

We turn complex datasets into clear, actionable visuals. Our tools transform data into interactive graphs and charts and if you need custom analysis or presentation, our engineers are here to help.

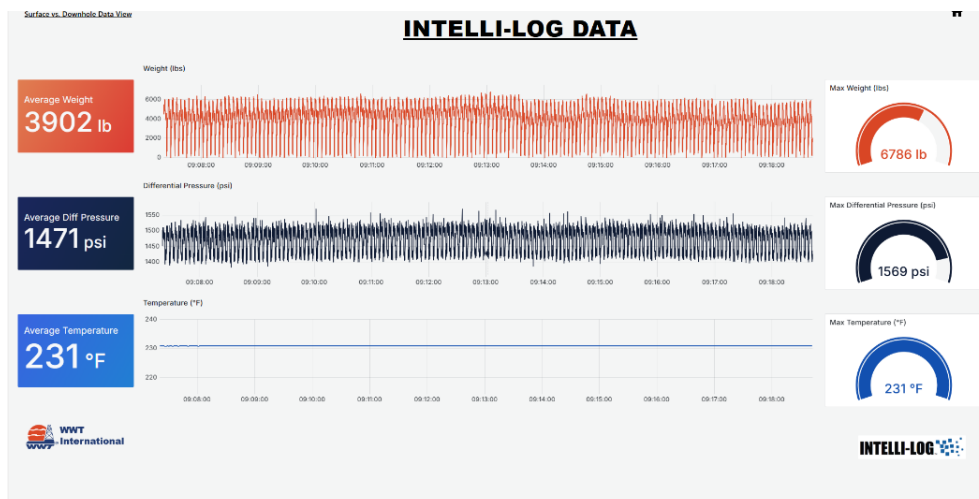
Logged Data

- Tubing/Bore pressure
- Annulus pressure
- Differential pressure
- Temperature
- Weight on Bit (tension/compression)



| | |
|------------------|----------------|
| Outside Diameter | 2-7/8 in. |
| Connections | 2-1/2" SUB-PAC |
| Length | 2 ft |
| Flow Rate | 7 BPM |
| Max Temperature | 347°F (175°C) |
| Max Pressure | 16,000 psi |
| Battery Life | 250 hours * |
| Memory Capacity | 350 hours * |

*Results May Vary Based on Tool Configuration



www.wwtco.com